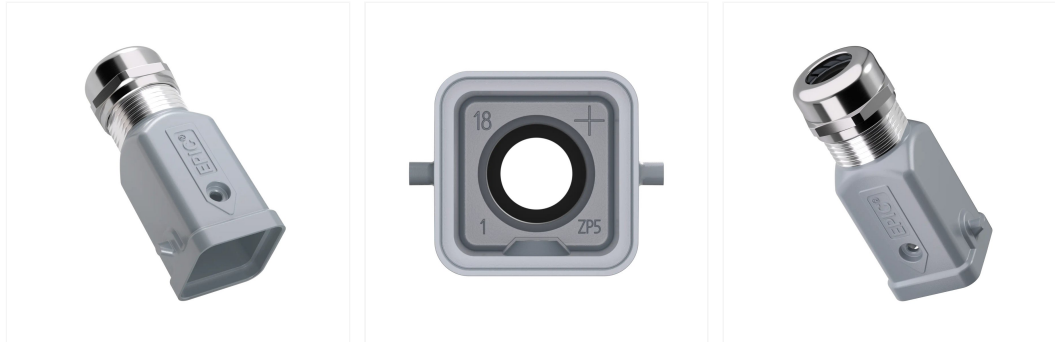


## EPIC® H-A 3 MTGV 7-13

**Article No.:** 19512102

Hood; Design size: 3A; Plug connection design: Standard; Single lever; Number of cable entries: 1; Zinc alloy, Powder-coated; IP protection class plugged in: IP 65



### Details

### Benefits

- The EPIC® H-A 3 series includes the smallest housings in heavy-duty industrial connectors and ensures secure connections in the smallest possible space.
- The hood can be connected with many standard housings (mount base, surface-mount base or cable coupler hood).
- With straight cable entry for orderly cable laying and to prevent the cable from bending too much.
- Available with threaded borehole or with extra large M25 threaded borehole for use with a corresponding cable gland.
- Also available as a variant with integrated SKINTOP® cable gland for optimum strain relief and sealing.
- Locking is performed using a single lever on the counter-housing.
- Meets protection class IP 65 when locked.
- The arrow is a new design element on the housing surface and makes it easy to find and easy to connect in tight spaces and possibly poorly visible areas of application.

### Application

- For protecting the connector insert against environmental influences.
- For use with many EPIC® rectangular connector inserts.

- For connecting devices and machines to a power supply in various applications
- Withstands high environmental and mechanical stress.
- Suitable for outdoor use.

**Notes**

Photographs and graphics are not to scale and do not represent detailed images of the respective products.

If applicable, the prices are solid metal prices without additional charges and VAT. Sales only to business customers.

Unless specified otherwise, the product values shown are rated values at room temperature. You can receive additional values, such as tolerances, upon request if they are available and have been released for publication.

**Remarks**

## Technical Data

**General information**

Brand	EPIC®
Product type	Hood
Design size	3A
Delivery Unit	10

**Electrical parameters****Product design**

With cable gland	Yes
Number of cable entries	1 pc.
Number of cable entries at the top	1
Number of cable entries sideways	0
Locking bolt variant	Bolts for Single Lever
With levers	No
Locking mechanism	Single lever
Number of locking bolts	2
Thread type	Metric

Type of housing	Hood
Connector housing design	Straight
With thread	Yes
With hinged lid	No
Connection design	Standard
With neck	No
Screen contact	No
EMC shielding	No
Min. cable clamping range	0.276 in
Cable clamping range max.	0.512 in
Housing main material	Zinc alloy
Housing coating	Powder-coated
Locking bolt material	Zinc alloy
Colour housing	gray
Housing RAL color	RAL 9006

#### Product features

IP protection rating mounted	IP 65
Short term temperature peak	125 °C
Operating temperature max.	-40 °C
Operation temperature max.	100 °C
UV-resistant	Yes
Chemical resistant	No
Acid-resistant	No
Corrosion-resistant according to	DIN EN 6988
corrosion resistant	Yes
Halogenfree	Yes

#### Certifications and standards

CE marking	Yes
UR recognized	Yes
UR certification	according to UL 1977 (CCN: ECBT2 / e-file number: E75770)

---

UL listed	No
UL category control number	ECBT2
cUR recognized	Yes
cUR certification	according to CSA C22.2 No. 182.3 (CCN: ECBT8 / e-file number: E75770)
cUR category control number	ECBT8
CSA certified	No
VDE certified	Yes
VDE registration number	B437
Product standard according to IEC	IEC 61984
TÜV certified	No

---

**EPIC® H-A 3 MTG**

Article No.	Name	With cable gland	Thread type	Thread size	Delivery Unit	Min. cable clamping range	Cable clamping range max.
19426500	EPIC® H-A 3 MTGV M20 3-13.5mm	Yes	Metric	M 20	10	0.118 in	0.531 in
19512100	EPIC® H-A 3 MTG M20	No	Metric	M 20	10		
19512102	EPIC® H-A 3 MTGV 7-13	Yes	Metric		10	0.276 in	0.512 in
19512103	EPIC® H-A 3 MTGH M25	No	Metric	M 25	10		
19512104	EPIC® H-A 3 MTGHV 9-17	Yes	Metric		10	0.354 in	0.669 in

V1.1